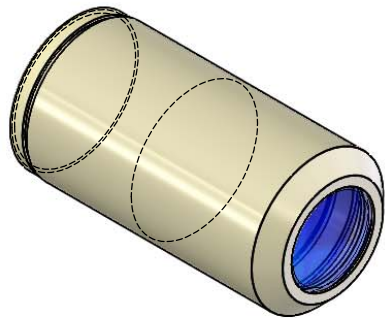
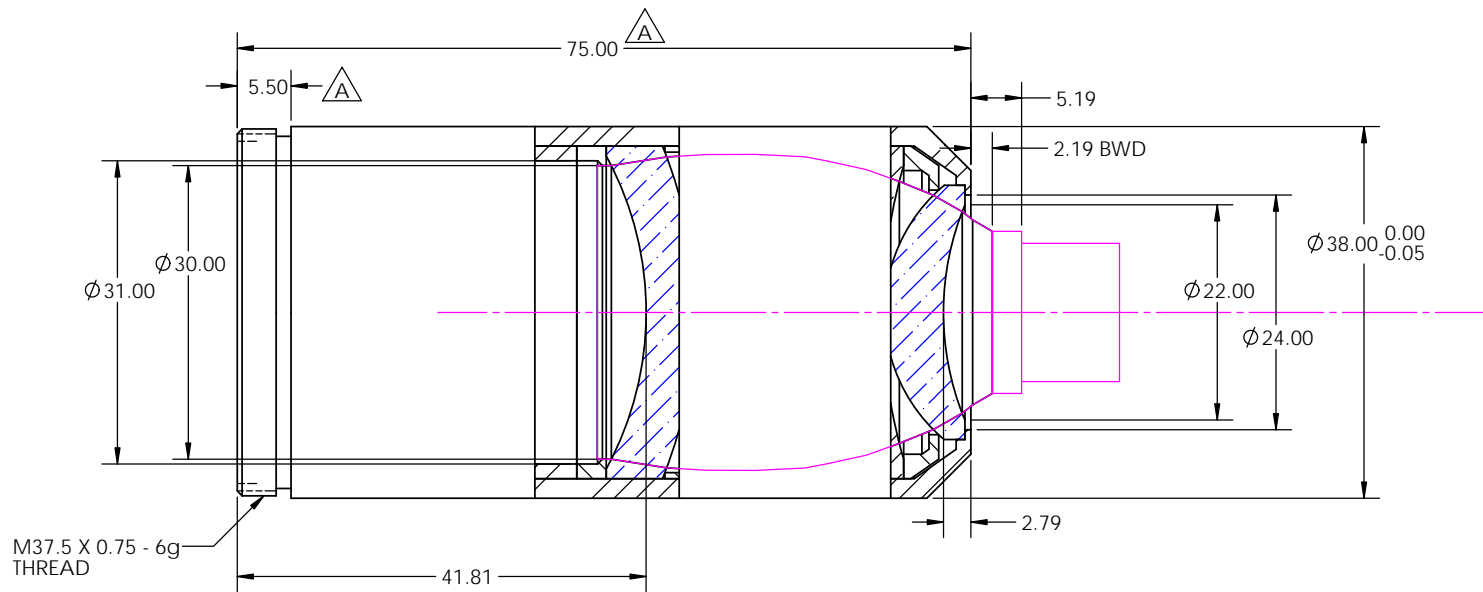



ALL MECHANICALS PARTS: ULTEM 2300 PEI-30
FINISH: NATURAL

REVISIONS				
ZONE	REV.	DESCRIPTION	DATE	APPROVED
	-	PROTOTYPE	10/26/2018	
	A	CH'D OVERALL LENGTH AND ADDED THREAD DIMENSION	11/15/2018	



<div>PROPRIETARY AND CONFIDENTIAL</div> <div>THE INFORMATION CONTAINED IN THIS DRAWING IS THE SOLE PROPERTY OF SPECIAL OPTICS. ANY REPRODUCTION IN PART OR AS A WHOLE WITHOUT THE WRITTEN PERMISSION OF SPECIAL OPTICS IS PROHIBITED.</div>		<div>UNLESS OTHERWISE SPECIFIED DIMENSIONS ARE IN MILLIMETERS AND INCLUDE CHEMICALLY APPLIED OR PLATED FINISHES.</div> <div>DRAWING COMPLIES WITH ASME Y14.5M-1994</div> <div>UNLESS OTHERWISE SPECIFIED UNTOLERANCED DIMENSIONS ARE BASIC</div> <div>LINEAR TOLERANCES: X-±.5 X-±.25 XX-±.13</div> <div>ANGULAR TOLERANCES: X°±.25° X°±.05° XX°±.005°</div>		<div>OUTLINE</div>		<div>SPECIAL OPTICS</div> <div>A NISITAR COMPANY</div> <div>Special Optics Inc. 3 Stewart Court Denville, NJ 07834</div>		
				<div>DRAWN: AFP</div> <div>DATE 10/26/2018</div>		<div>TITLE: ASSEMBLY</div> <div>54-30-27.5 @ 532, 671, 1064nm</div>		
				<div>CHECKED: XXX</div> <div>XXX</div>				
				<div>PROJECT #:</div> <div>XXX</div>				
<div>MATERIAL:</div> <div>AS NOTED</div>		<div>FINISH:</div> <div>NATURAL</div>		<div>THIRD ANGLE PROJECTION</div> <div></div>		<div>SIZE</div> <div>B</div>	<div>PART NUMBER</div> <div>1-28966</div>	<div>REV</div> <div>A</div>
<div>NEXT ASSEMBLY:</div> <div>1-28966</div>	<div>USED ON:</div> <div>xxx</div>	<div>DO NOT SCALE DRAWING</div>		<div>MAX. SURF. ROUGHNESS: 1/6</div>		<div>SCALE: 2:1</div> <div>WEIGHT: 81.74g</div> <div>SHEET 1 OF 1</div>		