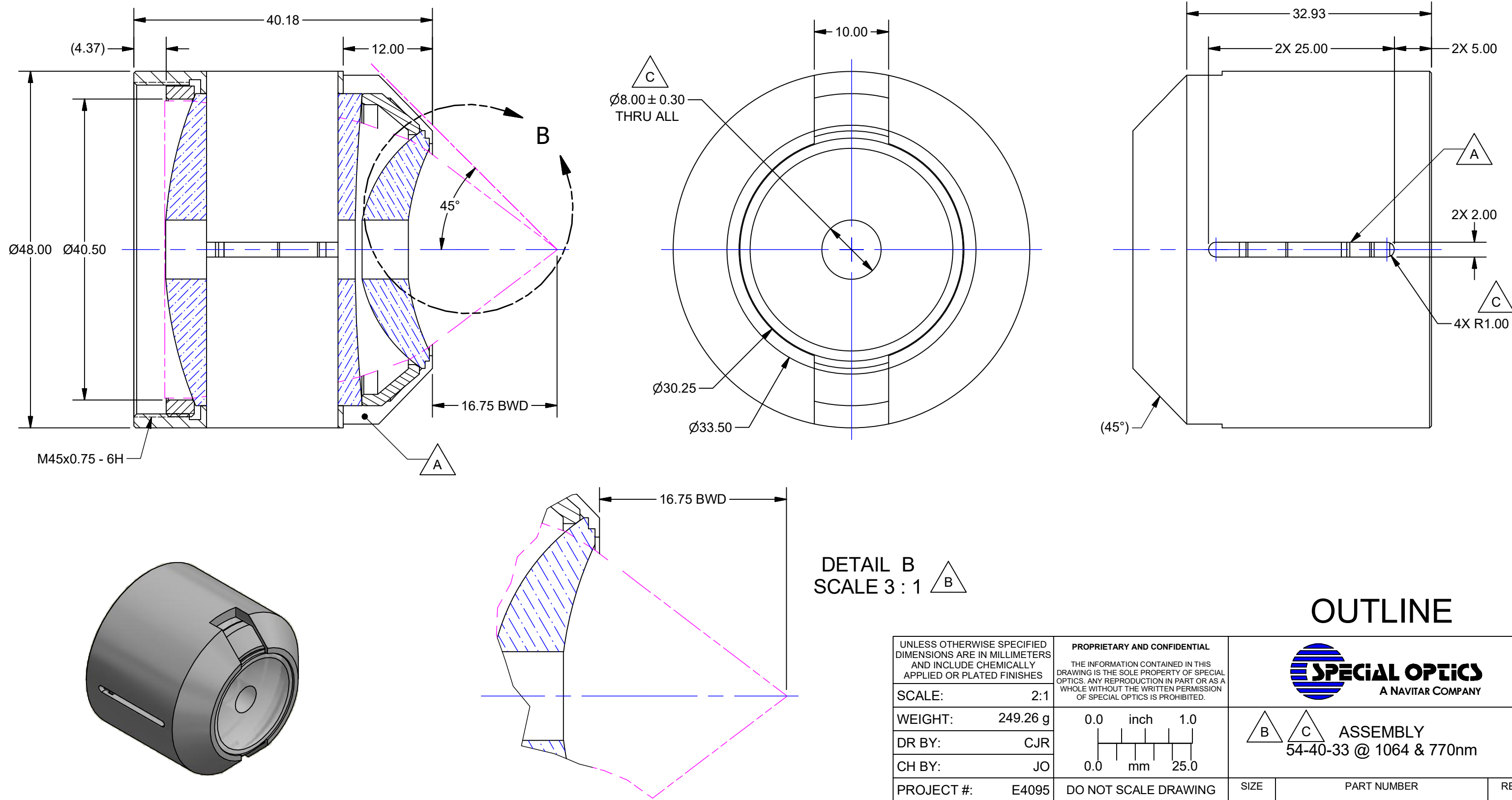

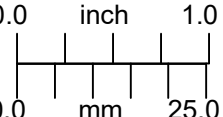


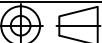


NOTES:
1. ALL MECHANICAL PARTS:
AISI 316L STAINLESS STEEL

REVISION HISTORY				
REV	DESCRIPTION	DATE	DR BY	CH BY
-	PROTOTYPE	12/07/2016	AFP	JO
A	ADDED FEATURES PER CUST. REQUEST	12/14/2016	AFP	JO
B	ADDED DETAIL VIEW B & UPDATED MODEL NUMBER	1/18/2017	AFP	JO
C	ADDED RADIUS TO ENDS OF 2.00mm SLOTS, UPDATED MODEL NUMBER, ADDED DIMENSION	2/6/2017	CJR	JO



UNLESS OTHERWISE SPECIFIED DIMENSIONS ARE IN MILLIMETERS AND INCLUDE CHEMICALLY APPLIED OR PLATED FINISHES		PROPRIETARY AND CONFIDENTIAL THE INFORMATION CONTAINED IN THIS DRAWING IS THE SOLE PROPERTY OF SPECIAL OPTICS. ANY REPRODUCTION IN PART OR AS A WHOLE WITHOUT THE WRITTEN PERMISSION OF SPECIAL OPTICS IS PROHIBITED.		 SPECIAL OPTICS A NAVITAR COMPANY		
SCALE:	2:1			  ASSEMBLY 54-40-33 @ 1064 & 770nm		
WEIGHT:	249.26 g			SIZE	PART NUMBER	REV
DR BY:	CJR			B	1-27131	C
CH BY:	JO					
PROJECT #:	E4095	DO NOT SCALE DRAWING				
DATE DR:	2/6/2017					