
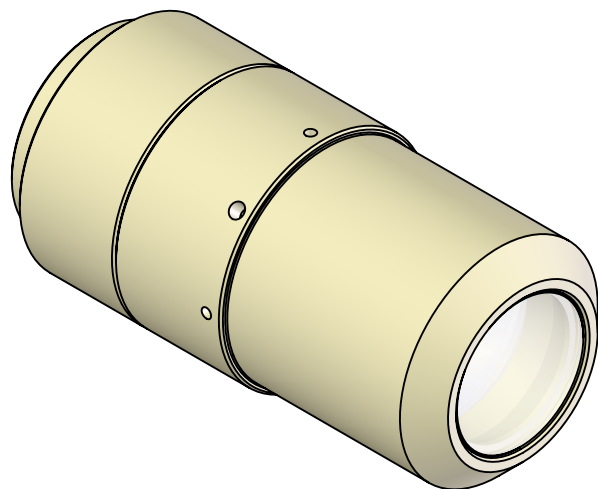
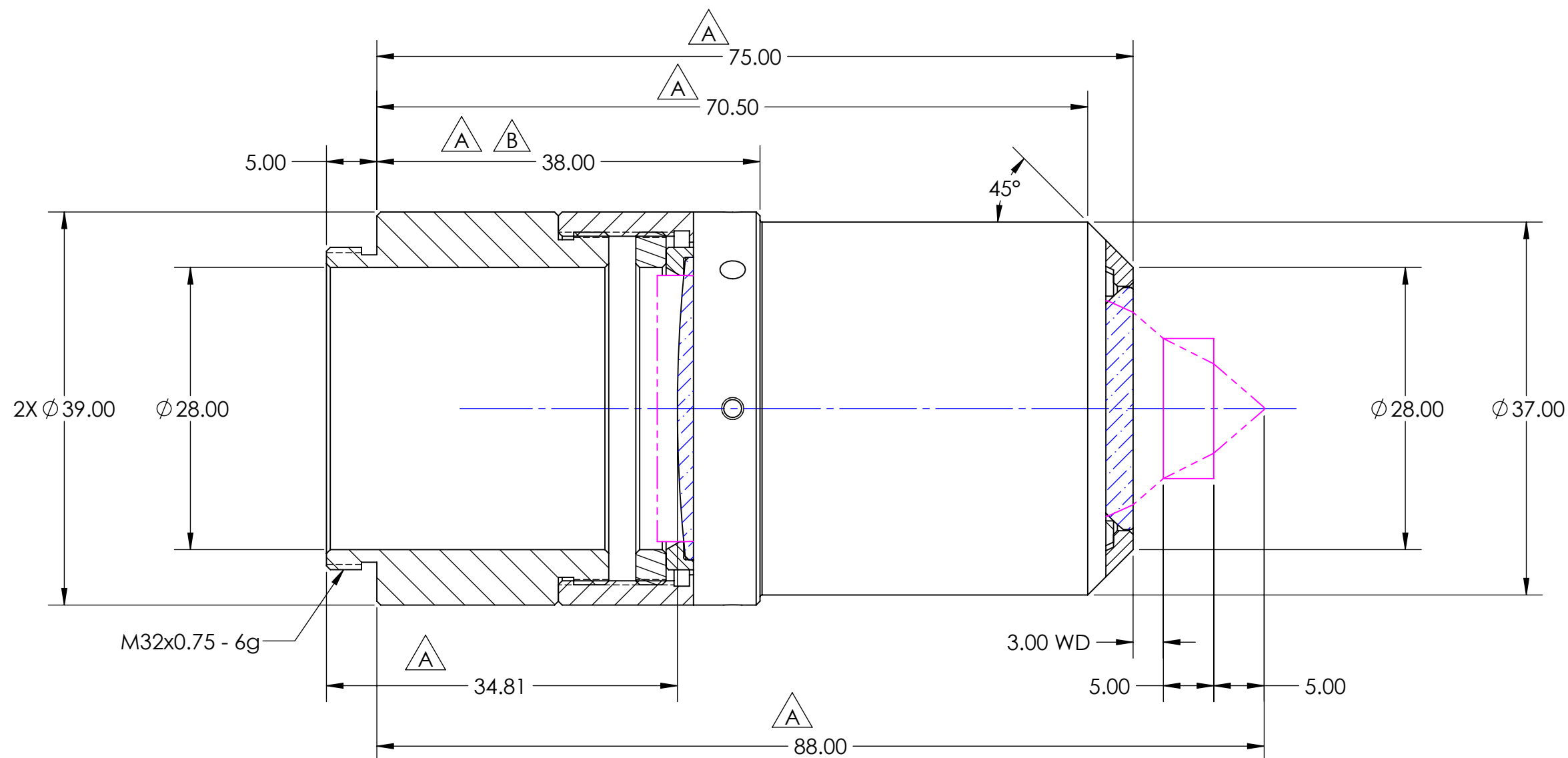
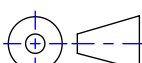


1) OBJECTIVE SHOWN WITH LENSES FLUSH WITH HOUSING

2) QTY OF (2) M35x0.75 THREAD ADAPTERS TO BE INCLUDED WITH TWO OBJECTIVES 

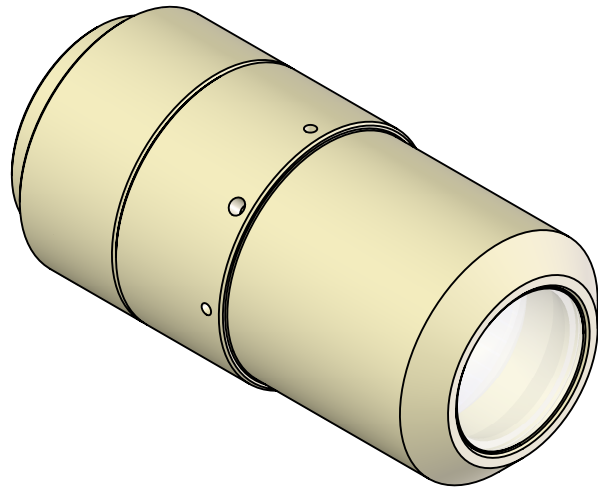
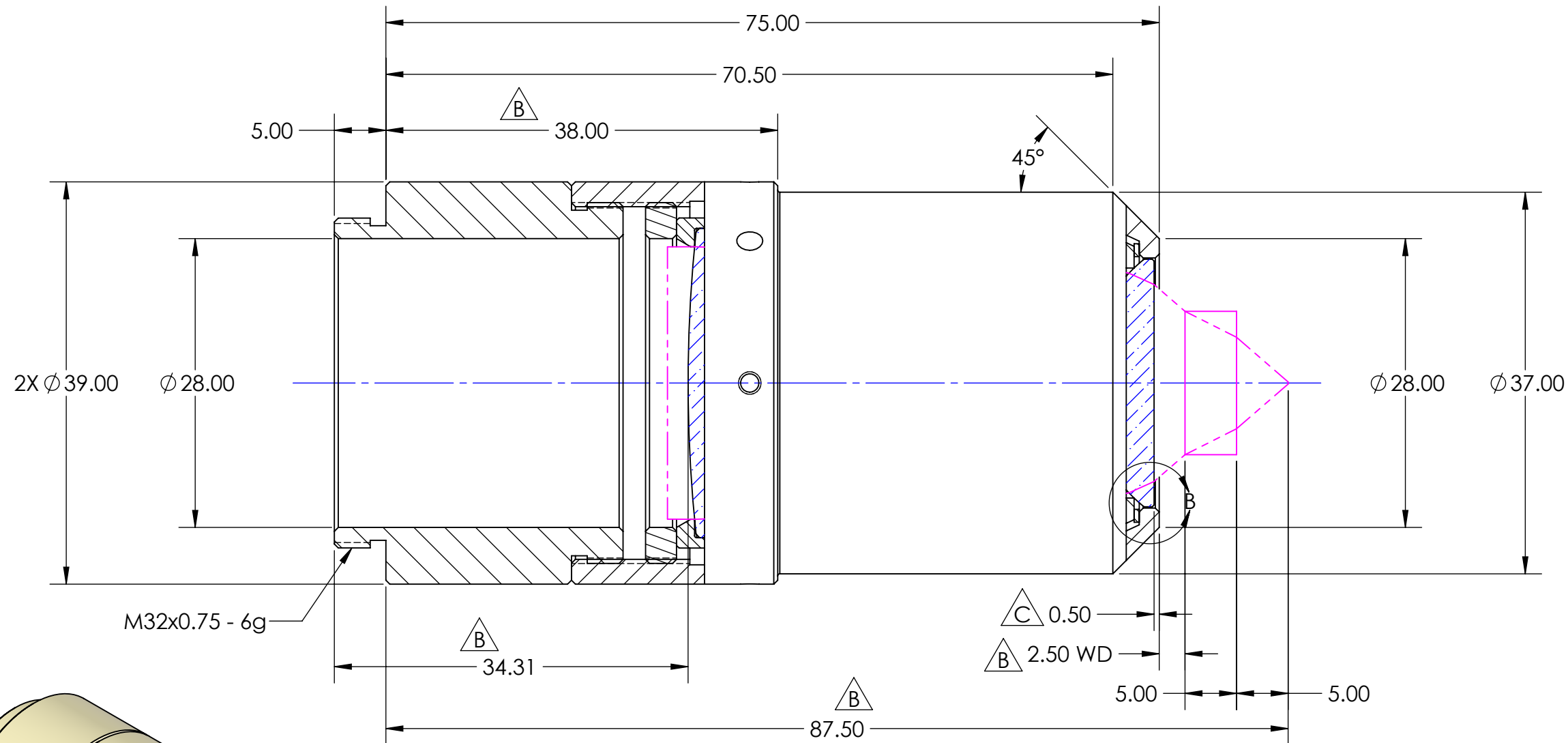
REVISIONS				
ZONE	REV.	DESCRIPTION	DATE	APPROVED
3-B4, 3-C6	B	ADDED 0.5mm RECESSED CONFIGURATION, REDUCED LENGTH OF THREAD ADAPTER AND SHOULDER	3/28/2019	
	C	ADDED DETAIL VIEW AND RECESSED DEPTH DIMENSION	4/4/2019	
D5	D	UPDATED NOTE TWO	4/5/2019	



<div>PROPRIETARY AND CONFIDENTIAL</div> <div>THE INFORMATION CONTAINED IN THIS DRAWING IS THE SOLE PROPERTY OF SPECIAL OPTICS. ANY REPRODUCTION IN PART OR AS A WHOLE WITHOUT THE WRITTEN PERMISSION OF SPECIAL OPTICS IS PROHIBITED.</div>	<div>UNLESS OTHERWISE SPECIFIED DIMENSIONS ARE IN MILLIMETERS AND INCLUDE CHEMICALLY APPLIED OR PLATED FINISHES.</div>	<div>OUTLINE</div>		<div><div>SPECIAL OPTICS®</div><div>A NANITAR COMPANY</div><div>Special Optics Inc. 3 Stewart Court Denville, NJ 07834</div></div>			
	<div>DRAWING COMPLIES WITH ASME Y14.5M-1994</div>			<div>TITLE:</div> <div>ASSEMBLY</div> <div>54-26.5-20 @ 532-1100nm</div>			
	<div>UNLESS OTHERWISE SPECIFIED UNTOLERANCED DIMENSIONS ARE BASIC</div> <div>LINEAR TOL. : X=±.5 .X=±.25 .XX=± .13 ANGULAR TOL. : X°=±.25° .X°=±.05° .XX°=.005°</div>	<div>DRAWN:</div> <div>CJR</div>	<div>DATE</div> <div>3/20/2019</div>				
		<div>CHECKED:</div> <div>XXX</div>	<div>XXX</div>				
<div>MATERIAL:</div> <div>ULTEM 2300 PEI-30</div>	<div>FINISH:</div> <div>NATURAL</div>	<div>PROJECT #:</div> <div>E4152</div>	<div><div>SIZE</div><div>B</div></div> <div><div>PART NUMBER</div><div>1-29453</div></div> <div><div>REV</div><div>D</div></div>				
		<div>THIRD ANGLE PROJECTION</div> <div></div>					
		<div>DO NOT SCALE DRAWING</div>				<div>MAX. SURF. ROUGHNESS:</div> <div>0.4√</div>	
				<div>SCALE: 2:1</div>	<div>WEIGHT: 129.06g</div>	<div>SHEET 2 OF 3</div>	

2) QTY OF (2) M35x0.75 THREAD ADAPTERS TO BE INCLUDED WITH TWO OBJECTIVES

DETAIL B  
SCALE 6 : 1



<div>PROPRIETARY AND CONFIDENTIAL</div> <div>THE INFORMATION CONTAINED IN THIS DRAWING IS THE SOLE PROPERTY OF SPECIAL OPTICS.. ANY REPRODUCTION IN PART OR AS A WHOLE WITHOUT THE WRITTEN PERMISSION OF SPECIAL OPTICS IS PROHIBITED.</div>	UNLESS OTHERWISE SPECIFIED DIMENSIONS ARE IN MILLIMETERS AND INCLUDE CHEMICALLY APPLIED OR PLATED FINISHES.	OUTLINE		<div><div><div><div></div></div><div>SPECIAL OPTICS®</div><div>A NANITAR COMPANY</div></div><div><div>Special Optics Inc.</div><div>3 Stewart Court</div><div>Denville, NJ 07834</div></div></div>					
	DRAWING COMPLIES WITH ASME Y14.5M-1994		NAME	DATE	TITLE: <div>ASSEMBLY</div> <div>54-26.5-20 @ 532-1100nm</div>				
	UNLESS OTHERWISE SPECIFIED UNTOLERANCED DIMENSIONS ARE BASIC	DRAWN:	CJR	3/20/2019					
		CHECKED:	XXX	XXX					
MATERIAL: <div>ULTEM 2300 PEI-30</div>	FINISH: <div>NATURAL</div>	PROJECT #:	E4152		SIZE <div>B</div>		PART NUMBER <div>1-29453</div>		REV <div>D</div>
		THIRD ANGLE PROJECTION		SCALE: 2:1		WEIGHT: 129.06g		SHEET 3 OF 3	
		DO NOT SCALE DRAWING	MAX. SURF. ROUGHNESS: <div>0.4</div>						