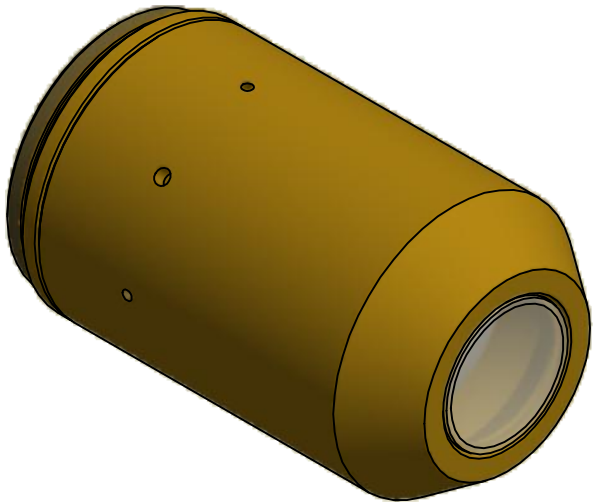
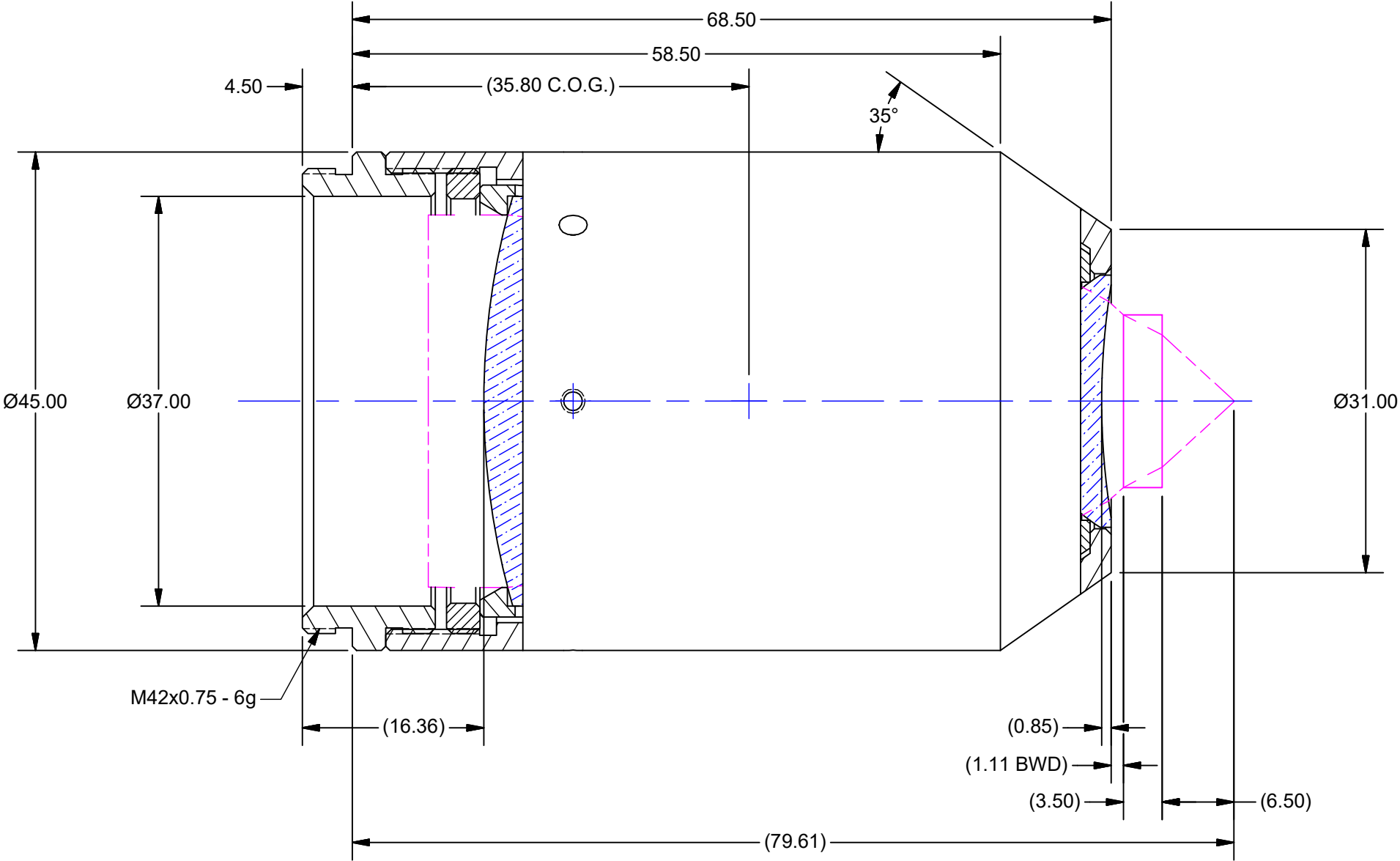



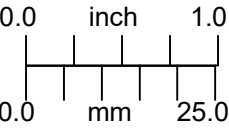
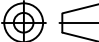
NOTES:

1. **HOUSING AND SPACER MATERIAL TYPE AND FINISH:**  
MATERIAL: ULTEM 2300 PEI-30  
FINISH: NATURAL
2. UNLESS OTHERWISE SPECIFIED  
ALL DIMENSIONS ARE ± 0.13mm

REVISION HISTORY				
REV	DESCRIPTION	DATE	DR BY	CH BY
-	PROTOTYPE	6/22/2018	CJR	
A	ADDED C.O.G. TO OUTLINE DRAWING	7/3/2018	CJR	
B	REMOVED 41.00mm STEP DIAMETER	7/5/2018	CJR	



OUTLINE

UNLESS OTHERWISE SPECIFIED DIMENSIONS ARE IN MILLIMETERS AND INCLUDE CHEMICALLY APPLIED OR PLATED FINISHES		PROPRIETARY AND CONFIDENTIAL  THE INFORMATION CONTAINED IN THIS DRAWING IS THE SOLE PROPERTY OF SPECIAL OPTICS. ANY REPRODUCTION IN PART OR AS A WHOLE WITHOUT THE WRITTEN PERMISSION OF SPECIAL OPTICS IS PROHIBITED.		 A NAVITAR COMPANY	
SCALE:	2:1			ASSEMBLY 54-34-25 @ 567-1228nm	
WEIGHT:	191.06 g				
DR BY:	CJR				
CH BY:		DO NOT SCALE DRAWING		SIZE	PART NUMBER
PROJECT #:	E4125			B	1-28498
DATE DR:	6/18/2018			REV	B