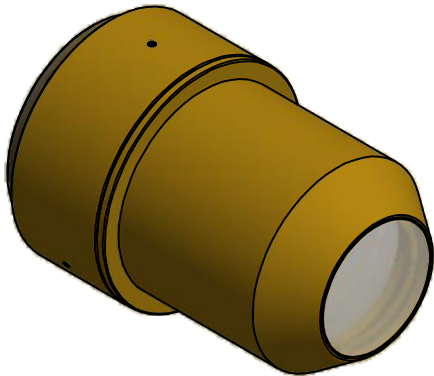
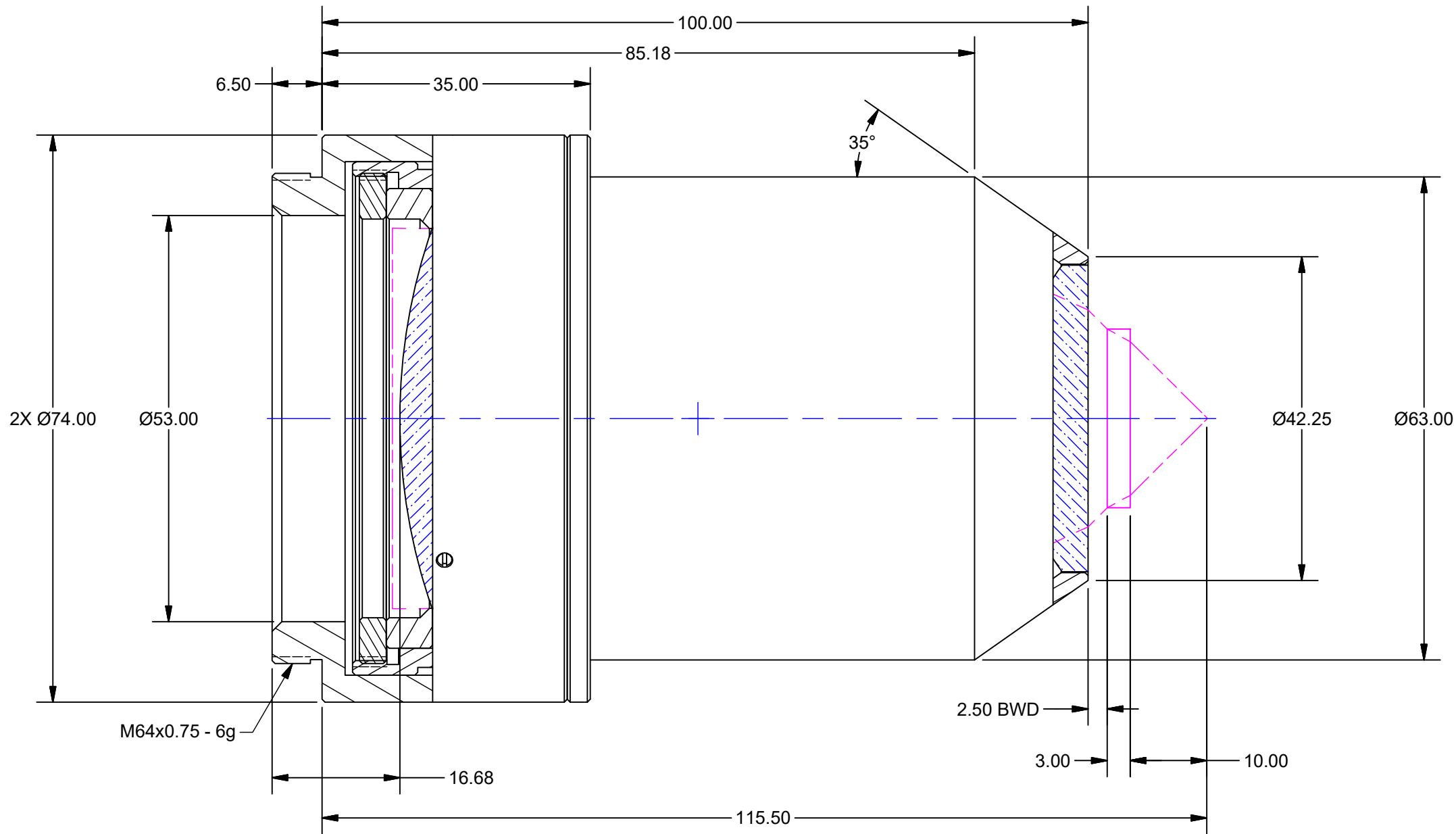


NOTES:


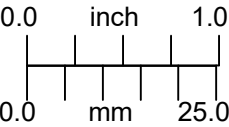

1. **HOUSING AND SPACER MATERIAL TYPE AND FINISH:**
MATERIAL: ULTEM 2300 PEI-30
FINISH: NATURAL

REVISION HISTORY				
REV	DESCRIPTION	DATE	DR BY	CH BY
-	PROTOTYPE	3/16/2018	CJR	



Preliminary Drawing:
Drawing to be used for
Prototype and Quote
purposes ONLY

OUTLINE

UNLESS OTHERWISE SPECIFIED DIMENSIONS ARE IN MILLIMETERS AND INCLUDE CHEMICALLY APPLIED OR PLATED FINISHES		PROPRIETARY AND CONFIDENTIAL THE INFORMATION CONTAINED IN THIS DRAWING IS THE SOLE PROPERTY OF SPECIAL OPTICS. ANY REPRODUCTION IN PART OR AS A WHOLE WITHOUT THE WRITTEN PERMISSION OF SPECIAL OPTICS IS PROHIBITED.		 A NAVITAR COMPANY	
SCALE:	1.5:1			ASSEMBLY 54-51-36 @ 767, 780, 852, 880, & 1064nm	
WEIGHT:	742.55 g				
DR BY:	CJR				
CH BY:		DO NOT SCALE DRAWING		SIZE	PART NUMBER
PROJECT #:	E4118			B	1-28330
DATE DR:	3/15/2018			REV	-