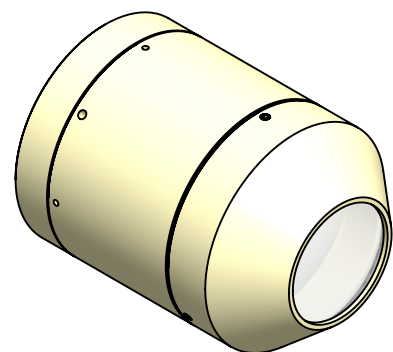
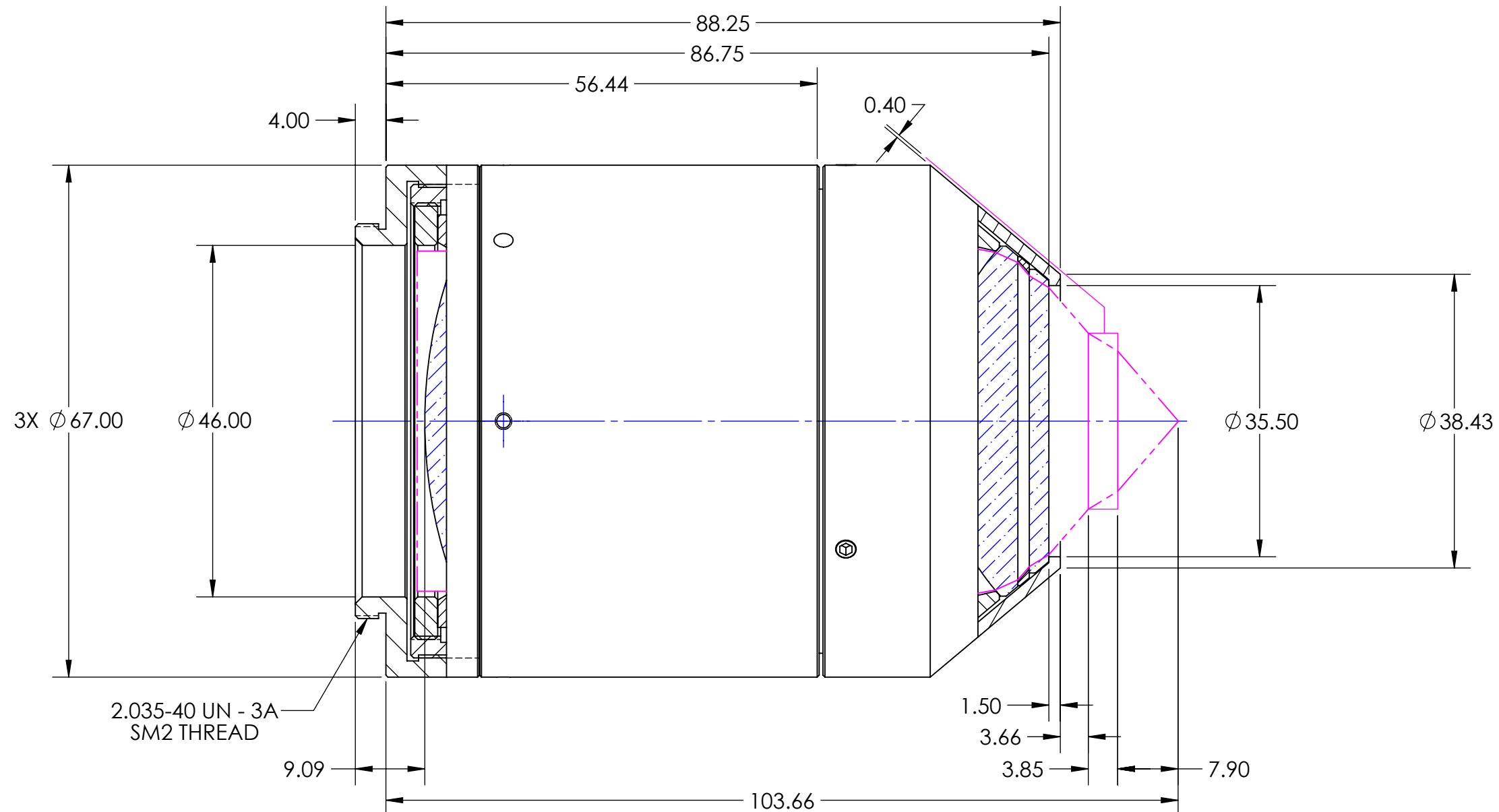
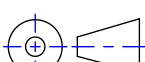
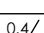


1. ASSEMBLY WITH WINDOW HOLDER INSTALLED.
2. WINDOW SPACER MADE FROM 6061-T6 ALUMINUM.
ALL OTHER COMPONENTS MADE FROM ULTEM 2300.

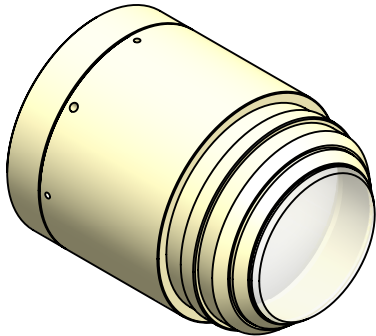
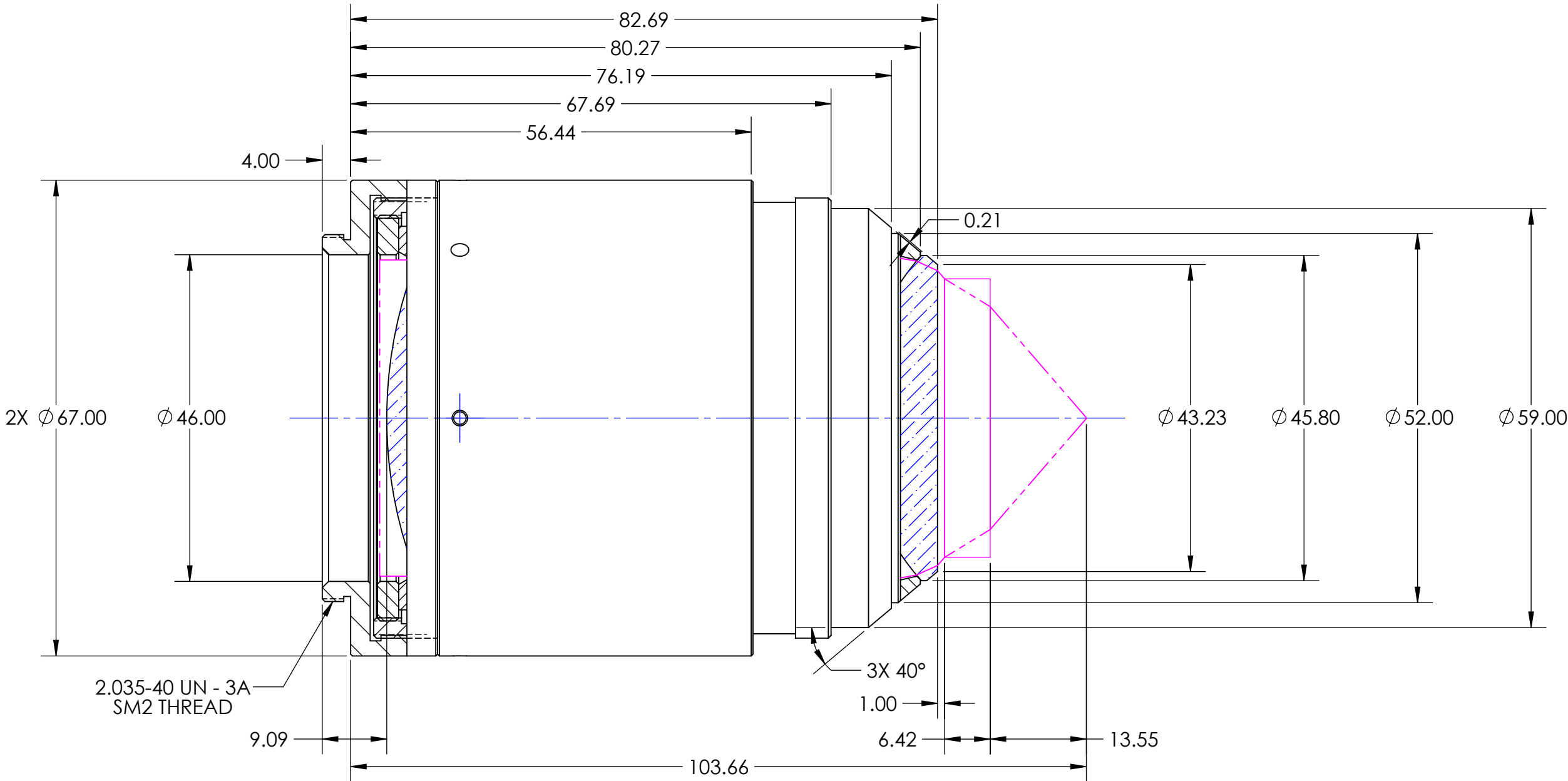
REVISIONS				
ZONE	REV.	DESCRIPTION	DATE	APPROVED
	-	PROTOTYPE	1/29/2019	
	A	REVISED FRONT OF HOUSING TO FIT INTO VIEWPORT WHEN WINDOW IS ATTACHED	2/27/2019	
	B	MADE WINDOW REMOVABLE	2/28/2019	



<div>PROPRIETARY AND CONFIDENTIAL</div> <div>THE INFORMATION CONTAINED IN THIS DRAWING IS THE SOLE PROPERTY OF SPECIAL OPTICS. ANY REPRODUCTION IN PART OR AS A WHOLE WITHOUT THE WRITTEN PERMISSION OF SPECIAL OPTICS IS PROHIBITED.</div>	<div>UNLESS OTHERWISE SPECIFIED DIMENSIONS ARE IN MILLIMETERS AND INCLUDE CHEMICALLY APPLIED OR PLATED FINISHES.</div>	<div>OUTLINE</div>		<div><div><div><div>SPECIAL OPTICS®</div><div>A NANITAR COMPANY</div></div><div><div>Special Optics Inc.</div><div>3 Stewart Court</div><div>Denville, NJ 07834</div></div></div></div>			
	<div>DRAWING COMPLIES WITH ASME Y14.5M-1994</div>						
	<div>UNLESS OTHERWISE SPECIFIED UNTOLERANCED DIMENSIONS ARE BASIC</div>	<div>DRAWN:</div>	<div>CJR</div>	<div>1/25/2019</div>	<div>TITLE:</div> <div>ASSEMBLY</div> <div>54-44-29 @ 532, 770, & 1064nm</div>		
	<div>LINEAR TOL. : X=±.5 .X=±.25 .XX=±.13 ANGULAR TOL. : X°=±.25° .X°=±.05° .XX°=.005°</div>	<div>CHECKED:</div>	<div>XXX</div>	<div>XXX</div>			
	<div>PROJECT #:</div>	<div>E4147</div>					
<div>MATERIAL:</div> <div>ULTEM 2300 PEI-30</div>	<div>FINISH:</div> <div>NATURAL</div>	<div>THIRD ANGLE PROJECTION</div> <div></div>		<div>SIZE</div> <div>B</div>	<div>PART NUMBER</div> <div>1-29061</div>	<div>REV</div> <div>B</div>	
<div>DO NOT SCALE DRAWING</div>	<div>MAX. SURF. ROUGHNESS:</div> <div></div>	<div>SCALE: 3:2</div> <div>WEIGHT: 602.57g</div> <div>SHEET 2 OF 3</div>					

NOTES:
1. ASSEMBLY WITH WINDOW HOLDER REMOVED.

REVISIONS				
ZONE	REV.	DESCRIPTION	DATE	APPROVED
	-	PROTOTYPE	1/29/2019	
	A	REVISED FRONT OF HOUSING TO FIT INTO VIEWPORT WHEN WINDOW IS ATTACHED	2/27/2019	
	B	MADE WINDOW REMOVABLE	2/28/2019	



<div>PROPRIETARY AND CONFIDENTIAL</div> <div>THE INFORMATION CONTAINED IN THIS DRAWING IS THE SOLE PROPERTY OF SPECIAL OPTICS. ANY REPRODUCTION IN PART OR AS A WHOLE WITHOUT THE WRITTEN PERMISSION OF SPECIAL OPTICS IS PROHIBITED.</div>	<div>UNLESS OTHERWISE SPECIFIED DIMENSIONS ARE IN MILLIMETERS AND INCLUDE CHEMICALLY APPLIED OR PLATED FINISHES.</div> <div>DRAWING COMPLIES WITH ASME Y14.5M-1994</div>	<div>OUTLINE</div>		<div><div><div></div><div>SPECIAL OPTICS®</div></div><div>Special Optics Inc. 3 Stewart Court Denville, NJ 07834</div><div>A NANITAR COMPANY</div></div>			
	<div>UNLESS OTHERWISE SPECIFIED UNTOLERANCED DIMENSIONS ARE BASIC</div> <div>LINEAR TOL. : X=±.5 .X=±.25 .XX=±.13 ANGULAR TOL. : X°=±.25° .X°=±.05° .XX°=.005°</div>	DRAWN:	CJR	1/25/2019			
		CHECKED:	XXX	XXX			
		PROJECT #:	E4147				
MATERIAL:	FINISH:	<div>THIRD ANGLE PROJECTION</div> <div></div>			TITLE:		
ULTEM 2300 PEI-30	NATURAL				ASSEMBLY 54-44-29 @ 532, 770, & 1064nm		
	DO NOT SCALE DRAWING	MAX. SURF. ROUGHNESS: 0.4/√			SIZE	PART NUMBER	REV
					B	1-29061	B
					SCALE: 3:2	WEIGHT: 574.88g	SHEET 3 OF 3