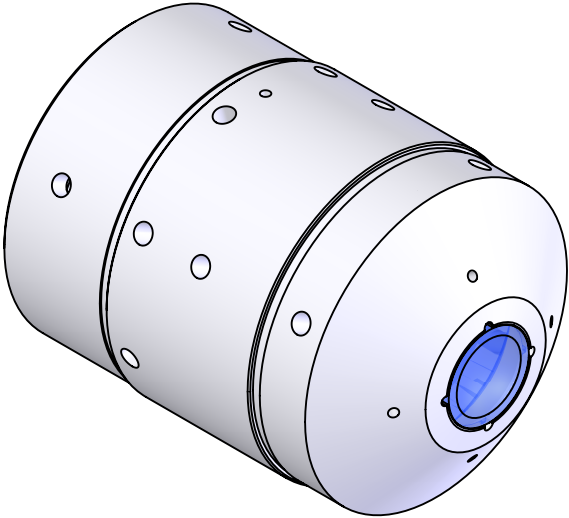
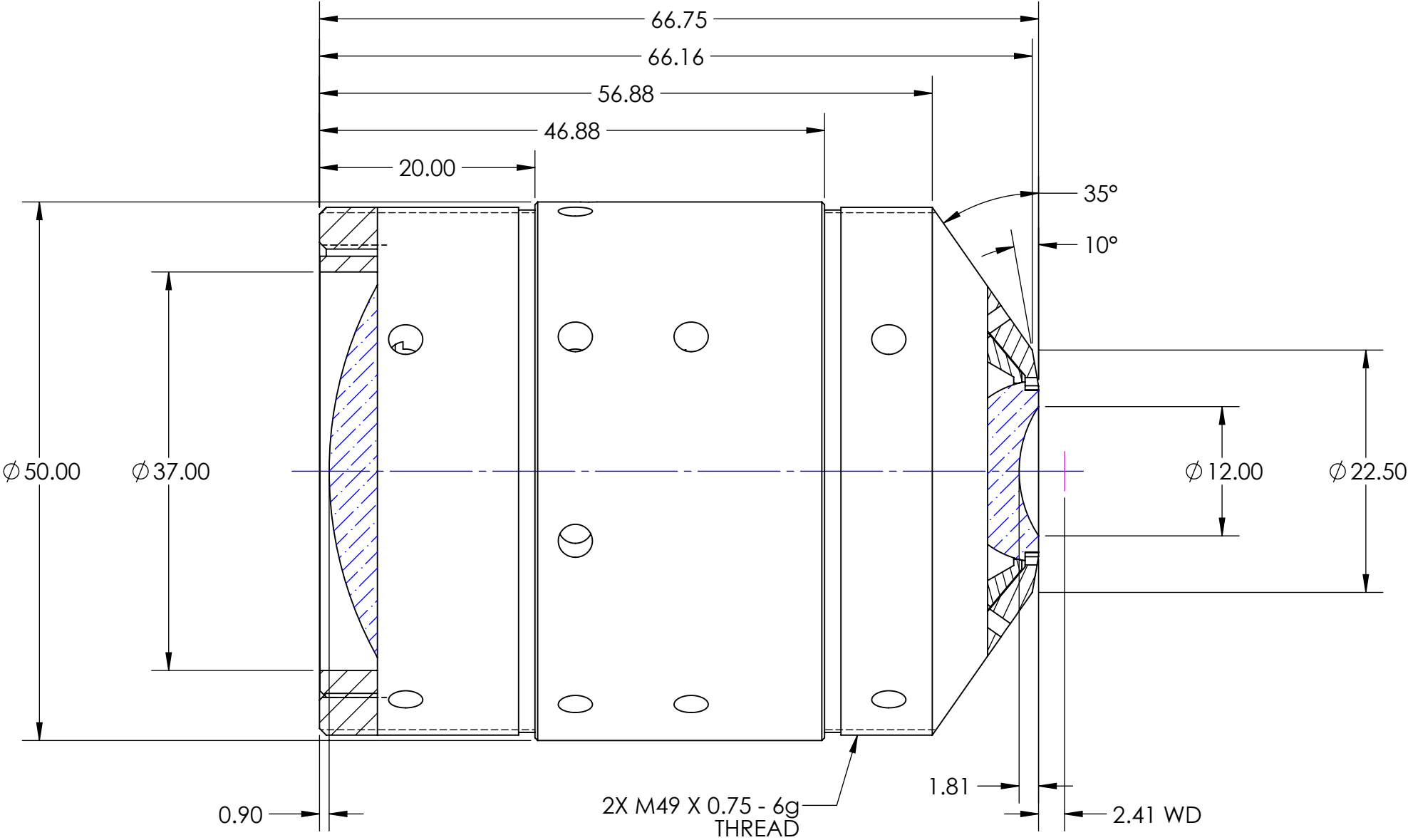

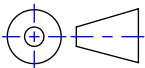



ALL PARTS MUST BE CLEANED FOR
COMPATIBILITY WITH UHV ENVIROMENT.

REVISIONS				
ZONE	REV.	DESCRIPTION	DATE	APPROVED
	-	PROTOTYPE	03/23/2018	JO
	A	ADDED THREAD ON BOTH SIDES	05/8/2018	JO
	B	REVISED TITLE BLOCK AND UPDATED MODEL	06/28/2018	JO



<div>PROPRIETARY AND CONFIDENTIAL</div> <div>THE INFORMATION CONTAINED IN THIS DRAWING IS THE SOLE PROPERTY OF SPECIAL OPTICS. ANY REPRODUCTION IN PART OR AS A WHOLE WITHOUT THE WRITTEN PERMISSION OF SPECIAL OPTICS IS PROHIBITED.</div>	UNLESS OTHERWISE SPECIFIED DIMENSIONS ARE IN MILLIMETERS AND INCLUDE CHEMICALLY APPLIED OR PLATED FINISHES.		OUTLINE		<div><div> SPECIAL OPTICS®</div><div>A NANITAR COMPANY</div><div>Special Optics Inc. 3 Stewart Court Denville, NJ 07834</div></div>				
	DRAWING COMPLIES WITH ASME Y14.5M-1994								
	UNLESS OTHERWISE SPECIFIED UNTOLERANCED DIMENSIONS ARE BASIC		DRAWN:	AFP	03/23/2018	TITLE: <div>ASSEMBLY</div> <div>54-36-20 @ 401, 421, & 633nm</div>			
	LINEAR TOL. : X=±.5 .X=±.25 .XX=±.13 ANGULAR TOL. : X°=±.25° .X°=±.05° .XX°=.005°		CHECKED:	JO	XXX				
		PROJECT #:	XXX						
MATERIAL: <div>MACOR</div>	FINISH: <div>NATURAL</div>		<div>THIRD ANGLE PROJECTION</div> <div></div>			SIZE	PART NUMBER		REV
						B	1-28370		B
	DO NOT SCALE DRAWING		MAX. SURF. ROUGHNESS: <div><div>0.4</div><div></div></div>			SCALE: 2:1		WEIGHT: 266.91g	SHEET 3 OF 3