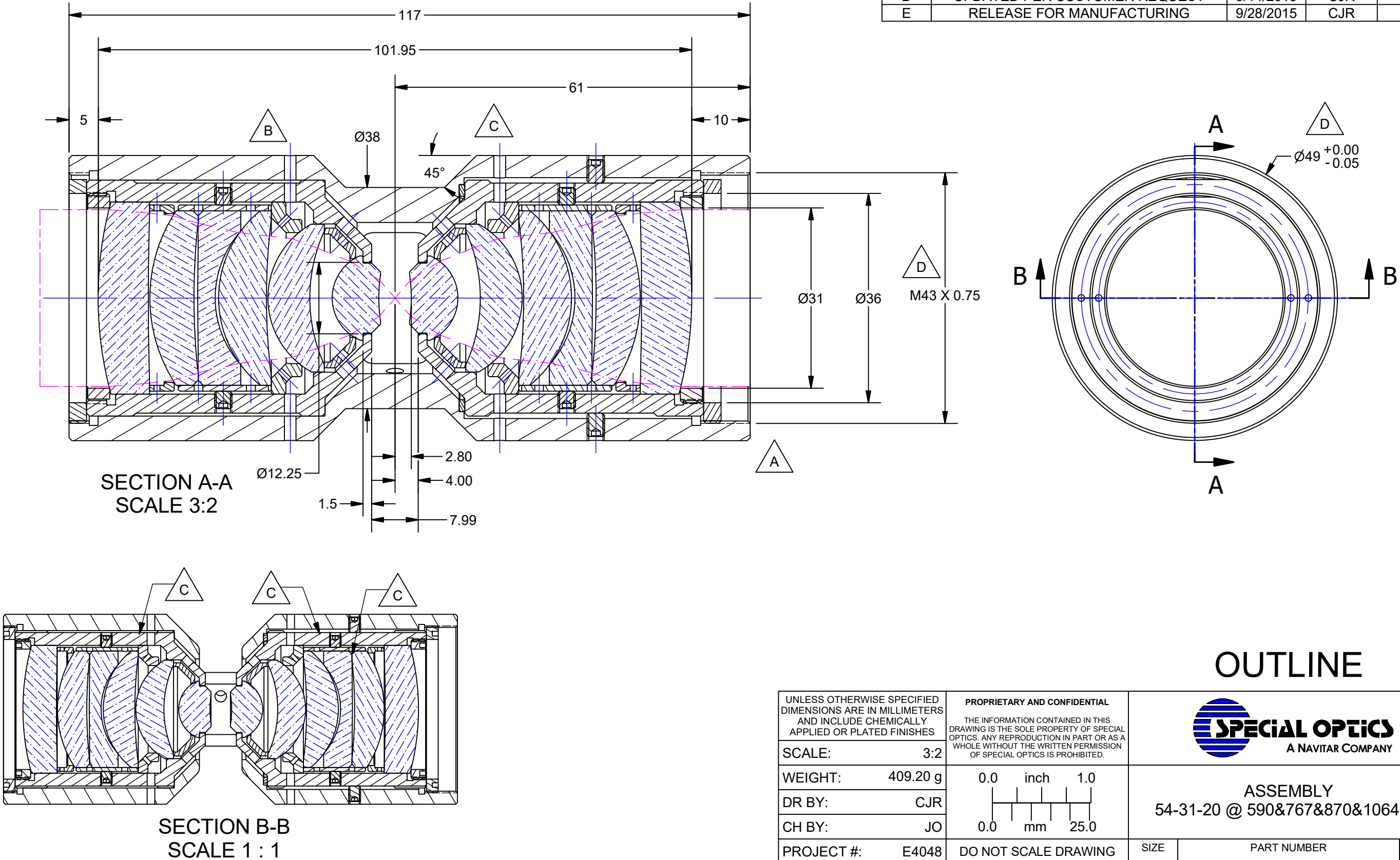

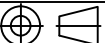


- NOTES: D
- 1. BAKE AND VENT ALL SET SCREWS FOR ULTRA-HIGH VACUUM PRIOR TO INSTALLATION
  - 2. ALL MECHANICAL PARTS CLEANED FOR ULTRA-HIGH VACUUM

REVISION HISTORY				
REV	DESCRIPTION	DATE	DR BY	CH BY
-	PROTOTYPE	7/10/2015	AFP	JO
A	ADDED MORE INFO PER CUSTOMER REQUEST	7/22/2015	AFP	JO
B	ADDED VENT HOLES AND CHANGES PER CUST REQ.	7/28/2015	AFP	JO
C	ADDITIONAL VENT HOLES AND NOTCHES	7/30/2015	AFP	JO
D	UPDATED PER CUSTOMER REQUEST	9/14/2015	CJR	JO
E	RELEASE FOR MANUFACTURING	9/28/2015	CJR	JO



UNLESS OTHERWISE SPECIFIED DIMENSIONS ARE IN MILLIMETERS AND INCLUDE CHEMICALLY APPLIED OR PLATED FINISHES		PROPRIETARY AND CONFIDENTIAL  THE INFORMATION CONTAINED IN THIS DRAWING IS THE SOLE PROPERTY OF SPECIAL OPTICS. ANY REPRODUCTION IN PART OR AS A WHOLE WITHOUT THE WRITTEN PERMISSION OF SPECIAL OPTICS IS PROHIBITED.		 <b>SPECIAL OPTICS</b> A NAVITAR COMPANY		
SCALE:	3:2	WEIGHT: 409.20 g		<div>ASSEMBLY</div> <div>54-31-20 @ 590&amp;767&amp;870&amp;1064nm</div>		
DR BY:	CJR	<div><div>0.0      inch      1.0</div><div><div></div><div></div><div></div><div></div><div></div></div><div>0.0      mm      25.0</div></div>				
CH BY:	JO					
PROJECT #:	E4048	DO NOT SCALE DRAWING		SIZE	PART NUMBER	REV
DATE DR:	7/30/2015			B	1-25921	E